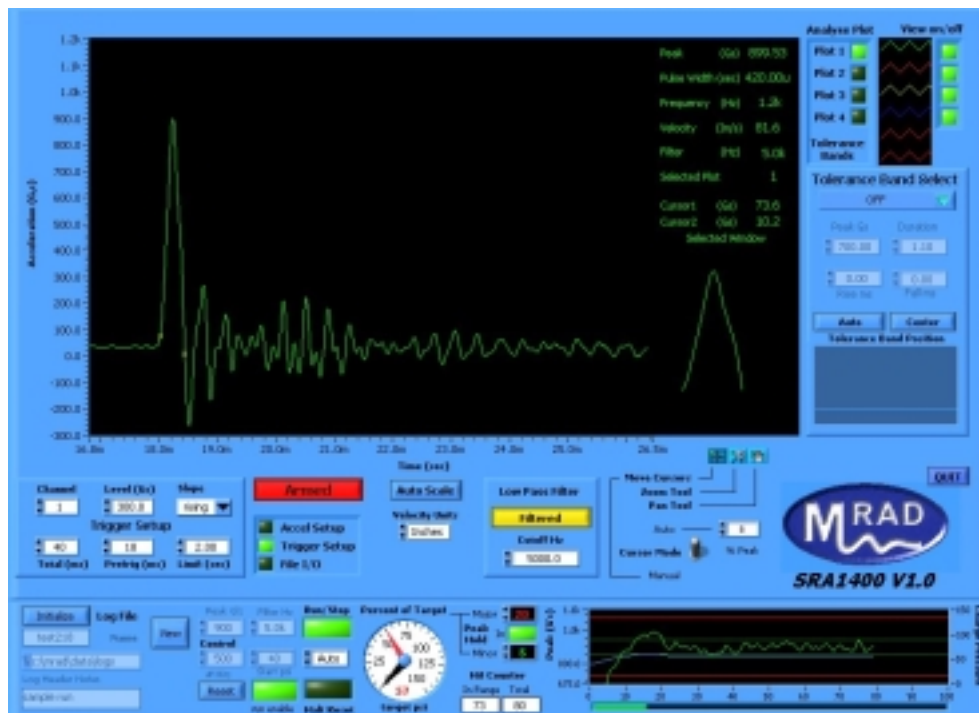


Operation of Automated Drop Control System



This control is used in conjunction with the M/RAD SRA-1400 shock monitor. The purpose of this control is to:

- regulate amplitude
- save each shock pulse
- execute a count of shock pulses on a pneumatic shock machine
- create a report and graph of shock history
- provide the ability to review individual shock pulses that were saved during a program run.
- provide the ability to filter the control channel to provide a more consistent history of amplitude in order to maintain a trend within a user specified tolerance.



View of control with the M/RAD SRA-1400 shock monitor.